

Sanva engineering is leading Pump, valve manufacturer and trusted supplier for providing verity of pumps and valves to wide range of different industries like waste water, pharmaceuticals, food processing, semiconductor, chemical, Oil and Gas, Petroleum industries and Marine industries.

Sanva engineering have three manufacturing plants in Tamilnadu, India, and All our products are made of extremely good quality of raw materials which include Pumps, valves and Motors, Processing Machine and Equipment etc.

Our ranges of products are fabricated using superior quality materials that are tested for their quality and efficiency. Moreover, these are available in various sizes, load capacity and other technical specifications to suit the varying demands of our clients. We have highly experienced and trained workers to make the accessories according to the specifications of the clients.

We at are engaged in manufacturing, supplying and export of Solenoid and Pneumatic operated valves required for process automation for Pharma, Food and Bio-Medical Industries.

Being a quality centric organization, our prime focus is to deliver superior quality products to our clients. The manufacturers of our offered product range test these products on set quality parameters. Before delivery, these products are strictly tested by our quality inspectors as per the international parameters. We are a client centric organization and our aim is to achieve the complete satisfaction of clients. By offering top notch quality products in the market, we have attained the vast client base. Moreover, our after sales services also assisted us in gaining wide client base and satisfying them successfully. We have been successful in winning accolades all over, by working in close coordination with our clients to conceptualize their requirements and prompt deliveries of products.

Our product range includes:

Centrifugal pump



Horizontal split casting pump



Multistage centrifugal



screw pump



Cavity screw pump



process pump-chemical, oil, solvent, hot water, slurry



Vertical multi stage



Air Operated Diaphragm Pump



Polypropylene chemical process pumps



stainless steel pumps



Metering pumps



Metering pump



Pump spare parts



pump seals



Double Spring Seals



PTFE Bellows Seals



Medium Flow Peristaltic Pump



Valve less Rotary Pump



Dosing Pump

Different type of valves



# Valves



PHV - Pilot diaphragm sanitary Back Pressure Regulating Valve  
PRV - Pilot diaphragm sanitary downstream Pressure Reducing Valve



MODEL - PHV\* / PRV\*

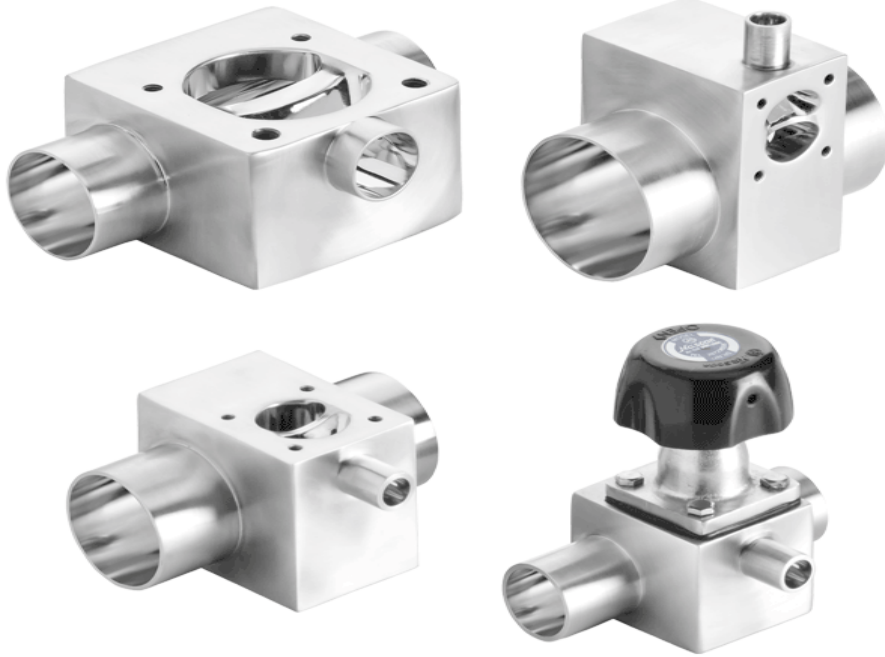


Pneumatic Rotary Actuated Cast Iron Butterfly Valve  
Design as per BS EN 558-1:1995



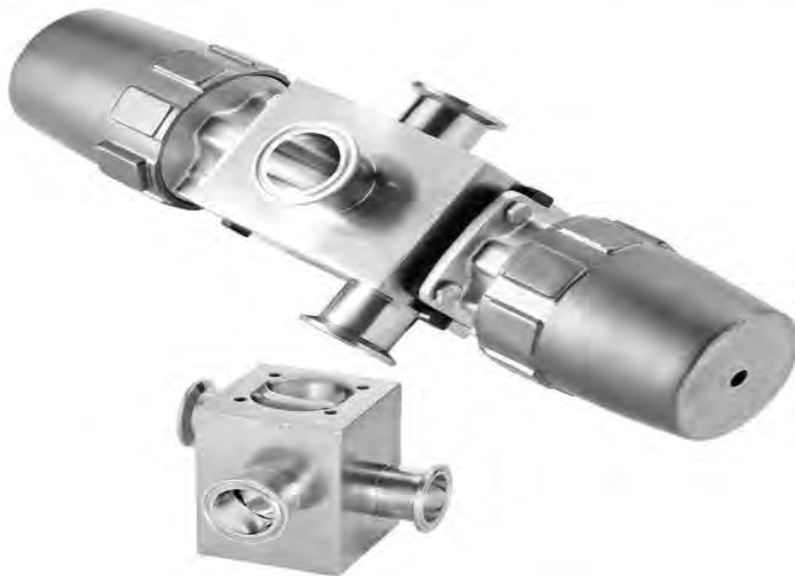
MODEL – RD4400\*

Manual & Pneumatic operated Zero Dead Leg 'T'  
Pattern BLOCK diaphragm valve



MODEL - ZDT0M\* & ZDT0P\*

Manual & Pneumatic Twin cavity Block valve



MODEL - BT60M\*, BT60P\*

Manual & Pneumatic Branch Block & Casted Sanitary Diaphragm Valve



MODEL - B6B0M\* & B6B0P\*



Stainless Steel Pump & Motor

Carbon Media



We are manufacture, supplier, trader, distributor and exporter of Carbon Media, which appears black and is granular. This variety of Granular Activated Carbon (GAC) is very popular among the clients for the purity levels it generates and the quality of treated water. It effectively removes excess chlorine, unwanted taste, color, odor and sediments organics from the water. Available in different sizes.



#### GRANULAR ACTIVATED CARBON

It is one of the widely used water purifier carbon mainly used in Sewage Treatment plants also used as Water Treatment Cartridge. Available in different sizes.



Filters available with different material like paper, polypropylene, polyester, melamine, cotton, glass, polypropylene, SS316, SS304, PVDF, and more including proprietary materials for highly aggressive applications and different sizes(1 , 5 , 10 , 20 , 50 & 100  $\mu\text{m}$ . )

**SANVA ENGINEERING**

**REG NO: 53274870X**

**HP: 94511951**

**ADDRESS: No. 5, SOON LEE STREET, #04-31 PIONEER POINT, SINGAPORE 627607**

**E-MAIL: SALES@SANVAENGINEERING.COM**